



It's hard to believe we're already in May – this year really is flying by!

A huge thank you to our PTFA for hosting the fantastic Chocolate Bingo event last week. It was a wonderful evening enjoyed by so many, and we're incredibly grateful for all the effort that went into organising it. We will share the total amount raised as soon as we have the final figure..

A quick reminder that school will be closed on Monday for the Bank Holiday. We would like to wish all our pupils, families and staff a very happy bank holiday weekend. We hope you manage to get out and about; enjoy the sunshine and some well-earned rest. We look forward to welcoming everyone back on **Tuesday 5th May**.

Finally, we would like to remind all families that we are a nut-free school. This is to ensure the safety of all our children, so we kindly ask that no nut products are brought into school

Thank you, as always, for your continued support.

*Mrs V Brown*

# Retirement

At the end of this term, we will be saying a fond farewell to Mrs Pickup, who is taking early retirement after many years (32) of dedicated service at Avondale Primary School.

Over the course of her time with us, Mrs Pickup has made an exceptional contribution to the life of our school. She has taught generations of children with care, patience and enthusiasm, and has been a trusted colleague and friend to staff, pupils and families alike. Her commitment to our pupils' learning and wellbeing has helped shape Avondale into the warm, inclusive school it is today.

Mrs Pickup will be greatly missed by everyone in our community, but we are delighted to celebrate her career and wish her a long, happy and well-deserved retirement. We hope her next chapter brings time to relax, pursue new interests and enjoy many wonderful moments ahead. We are currently in the process of recruiting for a new teacher to join our Avondale team in September.

**Today is also Mrs Pickup's birthday!**

HAPPY  
BIRTHDAY



# CLUBS

It has been great to have so many extra-curricular clubs on at school this week - even better that they could be enjoyed in the glorious sunshine! This week, our pupils have enjoyed JagTag, Gymnastics, Archery, Netball, Cross-Country and Cricket clubs in school. It has certainly been a very busy week of sport at Avondale!

We regularly hold meetings with our sports council and the pupils were keen to introduce American Football to Avondale. With this in mind, we took the suggestions on board and we now play 'JagTag' which is a modified version of the sport. Year 4 pupils are really enjoying it as part of their PE lessons and Y5 are loving their after-school club.



# Imagine that!

Year 1 had a wonderful trip to Imagine That! Science and Discovery Centre, where they enjoyed a range of hands-on activities. From creating artwork to making slime and exploring the Imagination Village, the children had lots of fun while learning. They behaved brilliantly and were a credit to the school—well done, Year 1!





# Stars of the Week



Elmer  
*Reggie*  
Gruffalo  
*Stanley*

Class 1N  
*Chester*  
Class 1S  
*Arlo Q*

Class 2L  
*John*  
Class 2P  
*Oliver*

Class 3B  
*Summer*  
Class 3L  
*Xavier*

Class 4F  
*Billy*  
Class 4W  
*Isaac*

Class 5M  
*Freddy*  
Class 5S  
*Harlow*

Class 6C  
*Lola*  
Class 6J  
*Elsa*

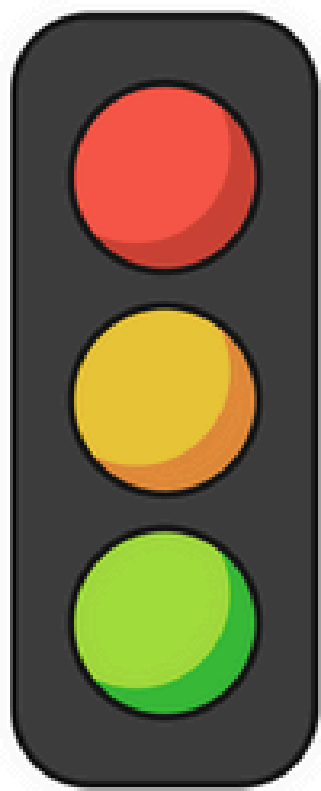
...and, of course, Teddy!



# Attendance

## Why is it important?

Good school attendance is vital to enable all children to achieve their full potential, develop socially, forge good friendships and have a sense of belonging within their school community. Our school attendance target is 97%. Thank you to all those families who are working with us to achieve the best outcomes for your child.



<p>89% &amp; Below Drastic effect on academic achievement</p>
<p>95% - 90% Cause for concern</p>
<p>100% - 96% Excellent</p>

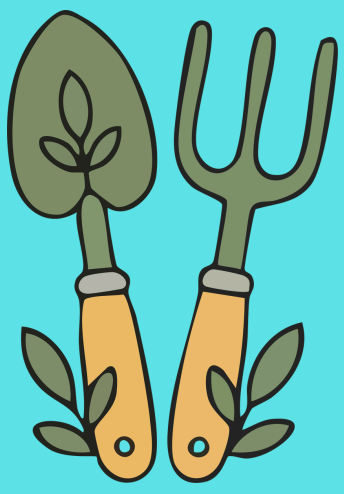
Attendance	Days Absent	Weeks Absent	Lessons Missed
95%	9 Days	2 Weeks	50 Lessons
90%	19 Days	4 Weeks	100 Lessons
85%	29 Days	6 Weeks	150 Lessons
80%	38 Days	8 Weeks	200 Lessons

2P	1S	4F
<b>100%</b>	99%	98.8%



Well done to 2P who had the best attendance this week.





# Gardening Club



This week's gardening club we planted some French runner beans along with some carrots. The children also could see the potatoes shooting up and lots of other seeds which other year 2 children planted a few weeks ago. We just need that sun to keep shining. Big thanks to Mrs Loftus for watering the school garden last weekend. 🌻



This week we have been planting carrots and French runner beans.



28/4/26



PIC•COLLAGE

# Breakfast club

Breakfast club had a St. George's day competition to design a shield. Here are our winners.



Competition winners for the best St George's Day shield.



# Join the Avondale Primary PTFA!



**We're looking for volunteers to join the Avondale PTFA - whether you can help with fundraising, organise fun seasonal events, or simply lend a hand now and then.**

**It's a great way to get involved and be a part of the Avondale community!**

**If you'd be interested in getting involved, please email: [friendsofavondale@avondale.blackburn.sch.uk](mailto:friendsofavondale@avondale.blackburn.sch.uk)**



## **First Aid Trained?**

We're especially keen to hear from any parents that are first aid trained, which helps with the smooth staffing of school events. Thank you.





Tues 5<sup>th</sup>/12<sup>th</sup> May – Bikeability: 5S

Mon 11<sup>th</sup>–Thu 14<sup>th</sup> May – SATS Week (Y6)

Tue 12<sup>th</sup> May – Y4 Trip – Turton Tower

Tue 19<sup>th</sup> May – EYFS Trip – Mrs Dowson’s Farm

Thu 4<sup>th</sup> June – Y6 Final Photos

w/c 8<sup>th</sup> June – Y1 Phonics Screening

Mon 8<sup>th</sup> June – Summer term parents' drop in 3:30–4pm

Tue 9<sup>th</sup> June – KS2 Sports Day

Thu 11<sup>th</sup> June – EYFS/KS1 Sports Day

15th–17th June – London Trip Year 6

Weds 8<sup>th</sup> July 2pm – Year 6 Production

Weds 8<sup>th</sup> July – Staff Training no After School Club

Thurs 9<sup>th</sup> July – Year 6 Production 6pm

Thurs 16<sup>th</sup> July – Year 6 Leavers' Celebration

Fri 17<sup>th</sup> July – Year 6 Assembly

Friday 17<sup>th</sup> July – School closes for summer at 1:30pm

# MENU

**Our new cold dinner option, High 5, has been a huge success this week with clean plates all round! If your child is currently on sandwiches and would like to move over to school lunches then please get in touch.**

**Please note that due to the need to plan meal numbers well in advance, children now choose their dinner options every Monday afternoon in class for the following week, in full. This means that if your child would like to try school dinners, this change won't come into immediate effect.**

**A reminder that lunches in Reception, Year1 and 2 are currently free for all children.**

**If your child is in KS2 and you think you may be entitled to free school meals then please check on line at:**

**<https://www.blackburn.gov.uk/schools-and-education/school-and-pupil-support/free-school-meals>**

# AVONDALE FOOD MENU

## MONDAY

- A Chicken Curry
- B Veg Curry
- C High Five
- D Jacket Potato

## TUESDAY

- A Spaghetti Bolognese
- B Veg Bolognese
- C High Five
- D Jacket Potato

## WEDNESDAY

- A Minced Beef
- B Veg Mince & Dumplings
- C High Five
- D Jacket Potato

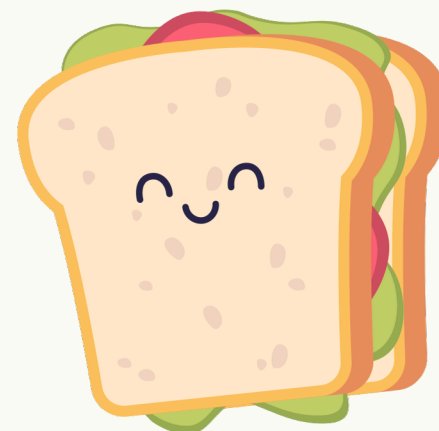
## THURSDAY

- A Meatball Subs
- B Cheese & Tomato Subs
- C High Five
- D Jacket Potato

## FRIDAY



- A Chicken Nugget Burger
- B Veg Nuggets
- C High Five
- D Jacket Potato



Peer Advice to Transform Health & wellbeing

**Are you a parent/carer living in Blackburn with Darwen?**

**We are here to help you understand and respond to your child's emotional and mental health, through peer support, workshops, guest speakers, and direct, virtual and in-person support.**



**Anxiety**

**Low mood & depression**

**Self-harm**

**Eating disorders**

**Sleep problems**

**Suicidal thoughts**

**Obsessions/compulsions**

**Join our drop in sessions**

**Darwen Family hub (9:30am - 11:30am)**



**Livsey Family hub (9:30am - 11:30am)**



**Shadsworth Family hub (9:30am - 11:30am)**



**Little Harwood (9:30am - 11:30am)**



**Call or email to find out more**

**This project is funded by the Lancashire and South Cumbria Integrated Care Board and delivered in partnership with Spring North.**

