

Last Friday we had a special visitor to school our local MP Andy MacNae. Mr MacNae came to have a debate with our debating team and to see school life at Avondale. This debating match was a battle match following on from last year. This year the debating team were debating:- 'Should teachers be replaced by robots?' Ironically the children were putting arguments forward as to why they should. There were several points articularly put forward by our debating team, children spoke really clearly and used excellent vocabulary which was so impressive. Unfortunately (or fortunately for the teachers) they didn't convince Mr MacNae that teachers should be replaced. However, a general consensus was that AI and technology could be used to support teachers in school and together they could help develop children's education. Mr MacNae was then given a tour of the school as well as discussing current educational issues with Mrs Brown. Hopefully feedback from Avondale will make it to the house of commons to be discussed. He commented on the calmness of the school and the strong behaviour for learning that the children displayed. We look forward to seeing Mr MacNae in the Houses of Parliament when Y6 visit later this term.





Field improvements

As a school we have been awarded some monies to repair the school fencing around Avondale School Field. So, we wanted to give you advance notice that works are being planned to replace the fence around our school field.

As you will be aware the fencing has been in a sorry state for a while due to vandalism, age of the fencing and lack of funding to repair it. However, we've now luckily secured funding to repair the fencing, making the field safe for our children and allowing it to be used more regularly as part of our school day.

We wanted to give you advance notice that works are being planned to replace the fence around our school field.

The safety of our pupils is our number one priority, and these improvements are much needed due to the condition of the current fence, which is limiting how we can use the space.

The school field is private land; however, we are aware it is used by local residents due to the current state of the fence and the open access it affords.

Once the works are complete, please know, the field will be closed to public use.

We appreciate it is valued by our community - including our own pupils, past and present - and every possible option has been explored to try to keep it open and make it work for us all.

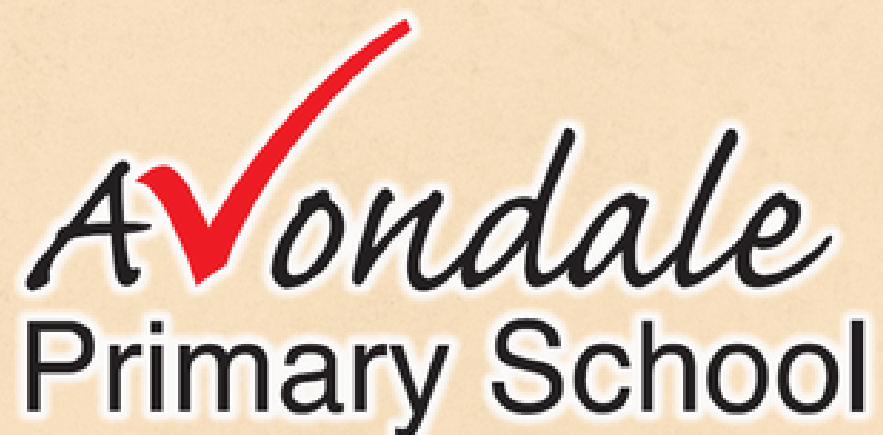
Unfortunately, this is just not feasible given our responsibilities, including the insurance we need to have in place.

We appreciate this may be disappointing, but we do hope you understand why this decision has had to be made.

The works will be carried out by a contractor and, once underway, are expected to take around four to six weeks to complete.

We thank you in advance for your understanding and continued support.

Avondale Primary School Governors



Avondale
Primary School

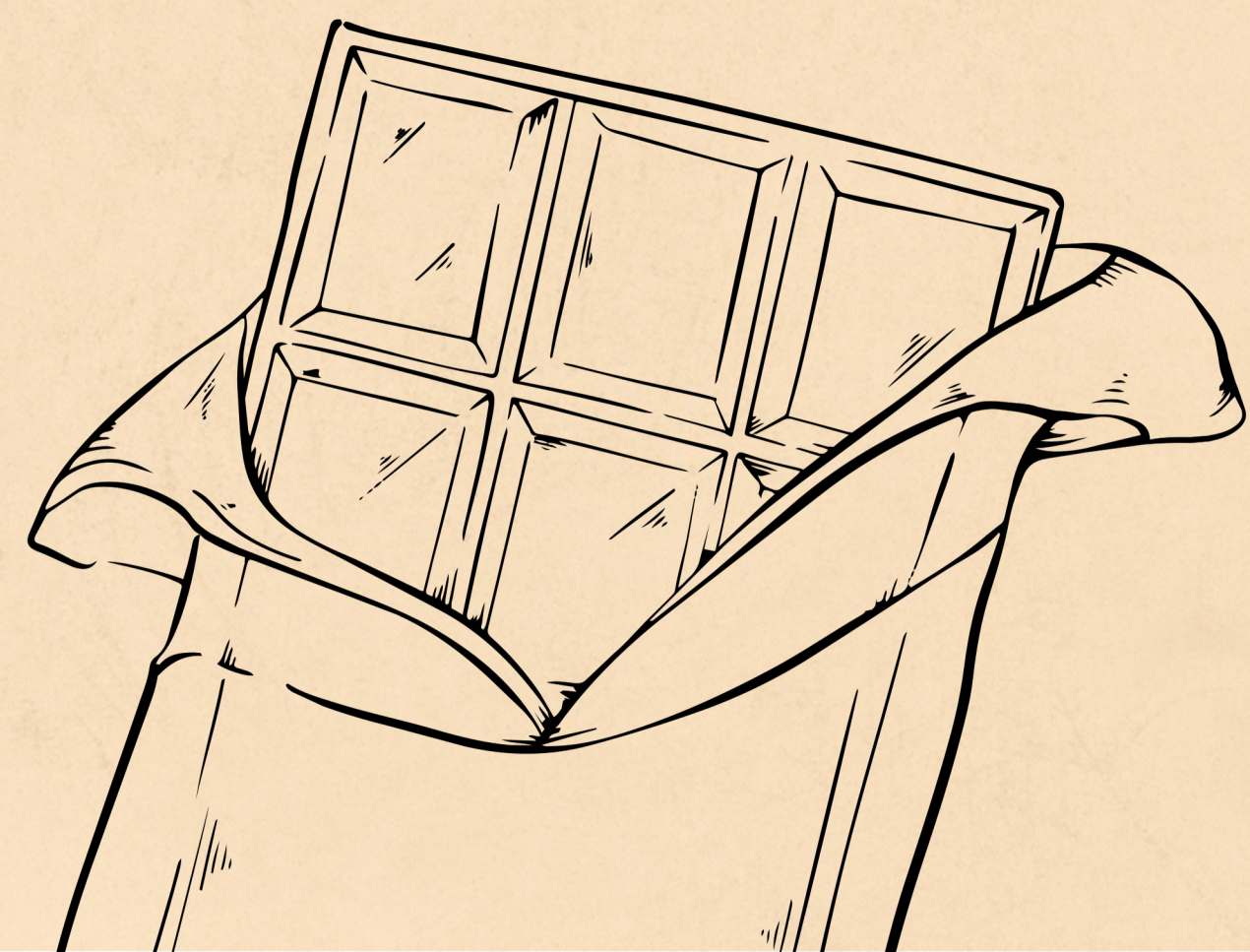
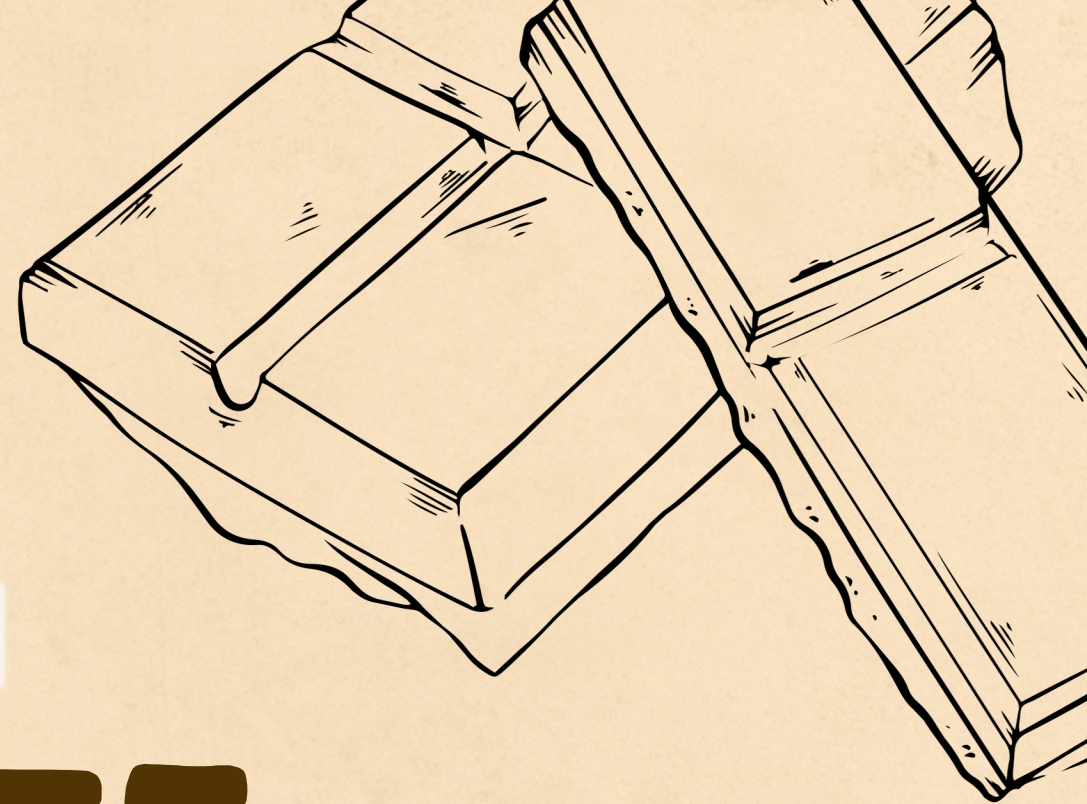
CHOCOLATE BINGO 2026

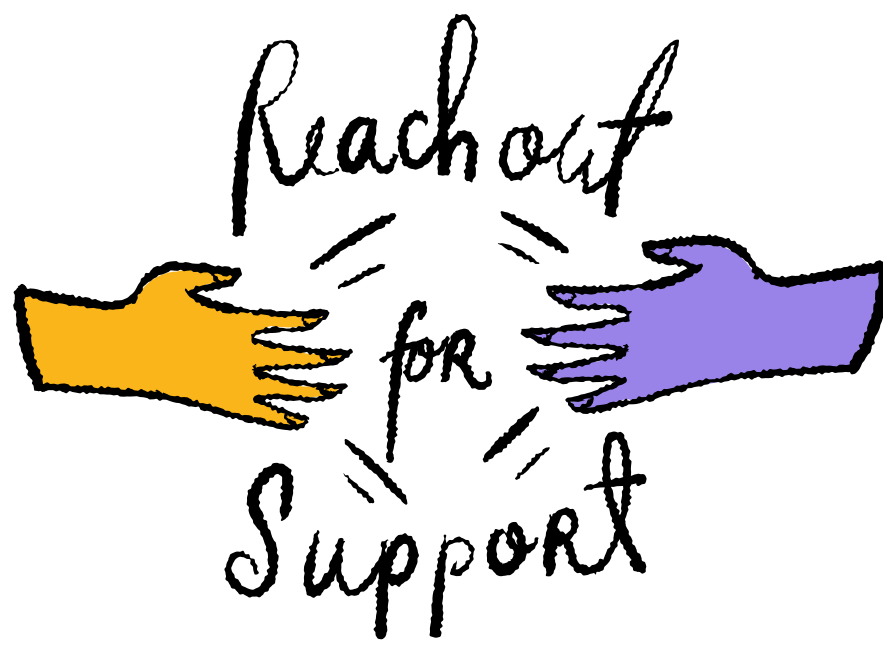
Friday 24 April - Doors open @ 6:30pm
Eyes Down @ 7:00pm

Tickets are £4 per Adult / £2 per Child or
£15 for a Family Ticket (2 x Adults /up to 4 x Children)

Dabbers / Food / Snacks / Drinks
will all be on sale on the night from 6:30pm

**Tickets are on sale on the door
this evening**





The cost of living continues to be difficult with food and now fuel prices continuing to rise. This is just to let you know there are a range of food support services and local provisions that you may be able to access, including the expansion of Free School Meal eligibility to families on Universal Credit from September 2026. Additional support includes:

Low-cost food boxes available via the Food Alliance SPROUTS Food Club | Blackburn with Darwen Borough Council

Local support available to help with the rising cost of living can be found here including food and energy support Help with the rising cost of living | Blackburn with Darwen Borough Council

A tool for parents to check what benefits they are entitled to Benefits Calculator

Holiday Activity Fund (HAF) programmes available for eligible children during school holidays Get Stuck In - Summer Activities For Kids

Why not have a look and see if there is any additional support out there that you can tap into.

Termly reports

Today you should receive, via email, your child's Spring Term report updating you on your child's attainment. If you haven't received it by Monday then please contact the office to check we have your correct email address. Hopefully lots of exciting news to celebrate.



It has been really lovely to find out who are new starters are for September 2026 and we are looking forward to meeting our new EYFS pupils. We are really pleased with our intake numbers this year, as always, but more so as the birth rate in Darwen is decreasing year on year. So very strangely for Avondale we have a couple of spare places. If you know anyone who hasn't necessarily got their preferred school and would like to come and join our fabulous school then please ask them to get in touch with the school office. Thanks





Stars of the Week



Elmer

Rosie

Gruffalo

Isaiah

Class 1N

Eva

Class 1S

Liam

Class 2L

Alaeze

Class 2P

Toby

Class 3B

Maxim

Class 3L

Lyla

Class 4F

Oliver

Class 4W

Noah

Class 5M

Rehan

Class 5S

Jaxon T

Class 6C

Darasimi

Class 6J

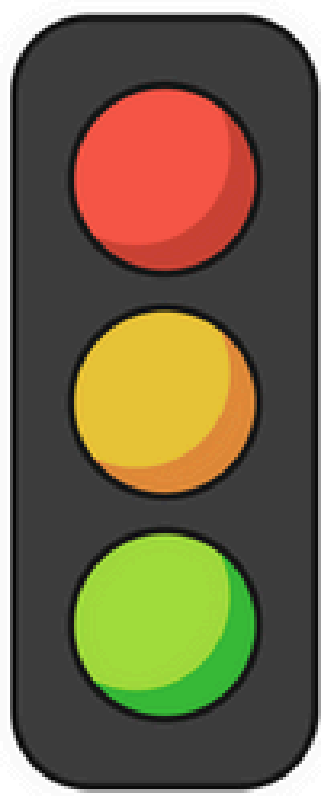
Layla



Attendance

Why is it important?

Good school attendance is vital to enable all children to achieve their full potential, develop socially, forge good friendships and have a sense of belonging within their school community. Our school attendance target is 97%. Thank you to all those families who are working with us to achieve the best outcomes for your child.



89% & Below Drastic effect on academic achievement
95% - 90% Cause for concern
100% - 96% Excellent

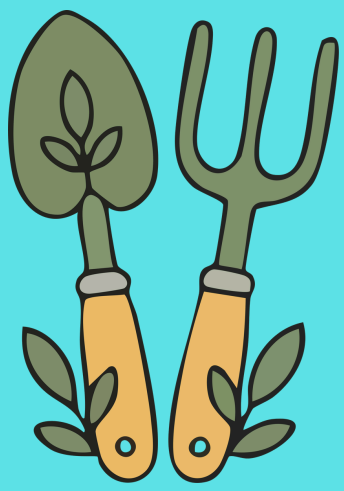
Attendance	Days Absent	Weeks Absent	Lessons Missed
95%	9 Days	2 Weeks	50 Lessons
90%	19 Days	4 Weeks	100 Lessons
85%	29 Days	6 Weeks	150 Lessons
80%	38 Days	8 Weeks	200 Lessons

1S	6C	5S & Gruffalo
100%	100%	99.3%



Well done to 1S & 6C who had the best attendance this week.





Gardening Club



This week in gardening club we did a sweet potato experiment by cutting them in half and placed them on a tray with soil and gave them a good watering .

We also planted some cucumbers and courgette seeds.

Reception children love gardening so much that Mrs Mears donated some of the school gardening club money , so now they have brand new gloves. So bring on the planting.

Reception children
getting new gardening
gloves donated by
Gardening club.



23.4.26



Join the Avondale Primary PTFA!



We're looking for volunteers to join the Avondale PTFA - whether you can help with fundraising, organise fun seasonal events, or simply lend a hand now and then.

It's a great way to get involved and be a part of the Avondale community!

If you'd be interested in getting involved, please email: friendsofavondale@avondale.blackburn.sch.uk



First Aid Trained?

We're especially keen to hear from any parents that are first aid trained, which helps with the smooth staffing of school events. Thank you.





Fri 24th April – Chocolate Bingo @ 6:30pm

Wed 29th April – Y1 Trip – Imagine That

Wed 29th/Thu 30th – Bikeability: 5M

Tues 5th/12th May – Bikeability: 5S

Mon 11th–Thu 14th May – SATS Week (Y6)

Tue 12th May – Y4 Trip – Turton Tower

Tue 19th May – EYFS Trip – Mrs Dowson’s Farm

Thu 4th June – Y6 Final Photos

w/c 8th June – Y1 Phonics Screening

Wed 8th June – Whole School Parent Drop In

Tue 9th June – KS2 Sports Day

Thu 11th June – EYFS/KS1 Sports Day

Wed 8th July – No After School Club

AVONDALE FOOD MENU

MONDAY

- A Chicken Fajitas
- B Veg Burger
- C High Five
- D Jacket Potato

TUESDAY

- A Beef Chilli
- B Veg Chilli
- C High Five
- D Jacket Potato

WEDNESDAY

- A Roast Chicken Dinner
- B Veg Sausage
- C High Five
- D Jacket Potato

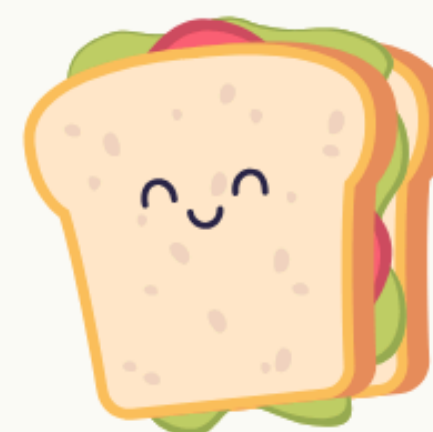
THURSDAY

- A Fish Finger Butty
- B Sweet & Sour Noodles
- C High Five
- D Jacket Potato

FRIDAY



- A Sausage Rolls
- B Cheese & Tomato Pizza
- C High Five
- D Jacket Potato



Peer Advice to Transform Health & wellbeing

Are you a parent/carer living in Blackburn with Darwen?

We are here to help you understand and respond to your child's emotional and mental health, through peer support, workshops, guest speakers, and direct, virtual and in-person support.



Anxiety

Low mood & depression

Self-harm

Eating disorders

Sleep problems

Suicidal thoughts

Obsessions/compulsions

Join our drop in sessions

Darwen Family hub (9:30am - 11:30am)



Livsey Family hub (9:30am - 11:30am)



Shadsworth Family hub (9:30am - 11:30am)



Little Harwood (9:30am - 11:30am)



Call or email to find out more

This project is funded by the Lancashire and South Cumbria Integrated Care Board and delivered in partnership with Spring North.

