

WELCOME BACK!

Welcome back everyone!

We hope you've all had a lovely break and are feeling refreshed and ready to learn.

We have a busy and exciting half term ahead, packed with lots of fun activities, new topics and opportunities to shine.

Let's work hard, support each other and make it a fantastic few weeks!

We can't wait to see all the amazing things you'll achieve.

WHIZZ KIDZ

This week we presented a cheque to Whizz Kidz, a charity close to our hearts. Together we raised a huge £594.93

A big thank you to Charlotte and George for presenting the cheque, and to everyone who generously donated over the Christmas period.





Introducing...

HIGH 5

Our new cold school dinner option, now available alongside our existing hot meals - giving children even more choice for their lunch !

Options will now be:

Hot meat option **(A)**, hot vegetarian alternative **(B)**, High 5 **(C)**, or a jacket potato **(D)**.

High 5 will ensure children continue to have a healthy, balanced cold meal, where pupils can select from a variety of nutritious items, including a minimum of 2 sandwich quarters, 2-3 snacks, an optional dessert and unlimited salad.

If your child is currently on packed lunches and would like to swap to school dinners, please contact the school office by Mon 20th April, by phone or email to confirm.

Starting Monday, 27th April 2026



Avondale
Primary School

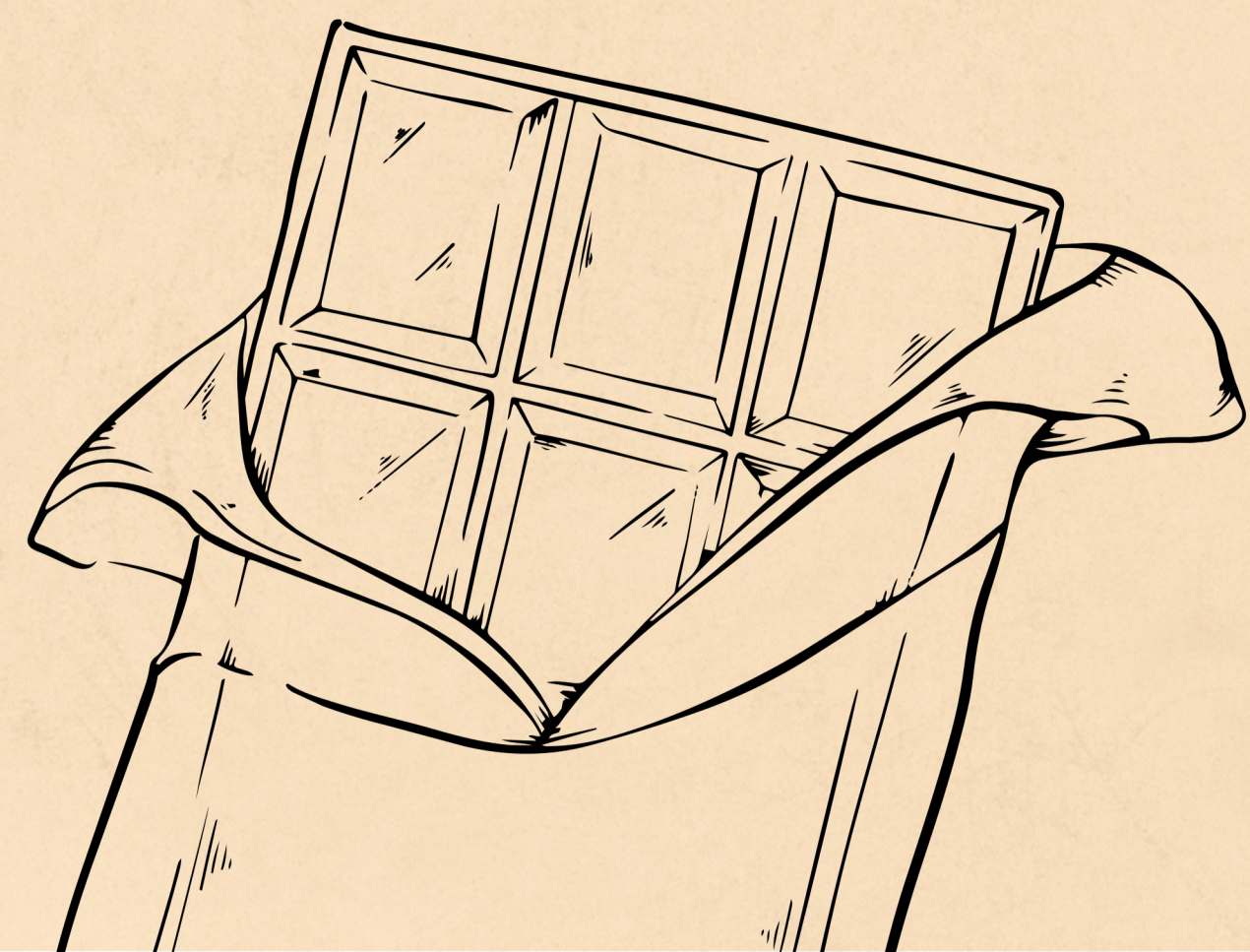
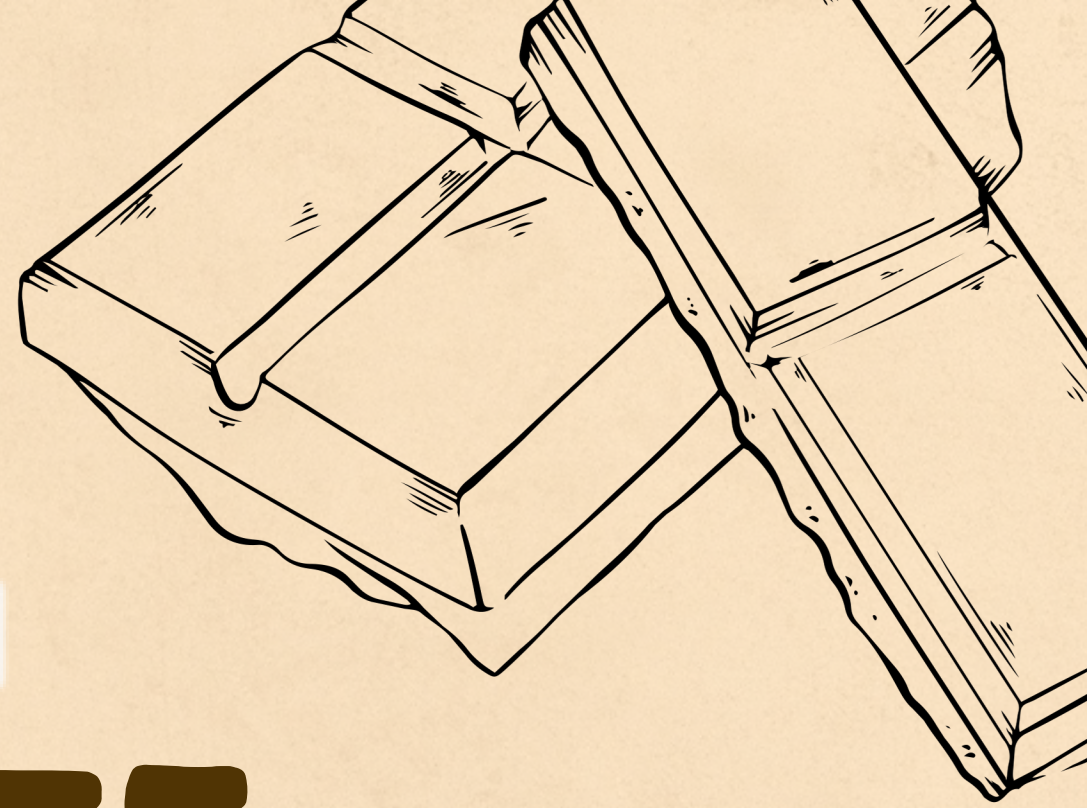
CHOCOLATE BINGO FINE DAY 2026

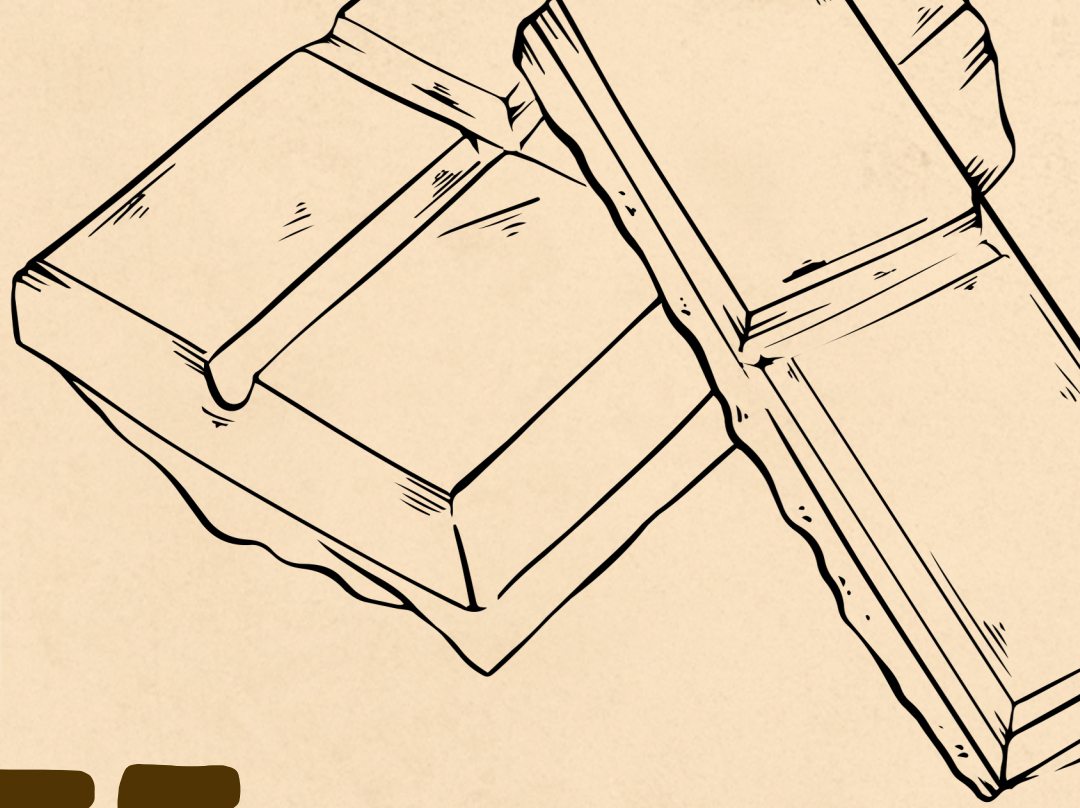
Friday 24 April 2026

We will be hosting a non-uniform day at school, where the fine will be a chocolate bar in return for for pupils and staff to wear their own clothes.

This will then be put together as prizes for the Chocolate Bingo even this is being hosted in school that evening.

We hope that everyone can get involved and we hope to see you at the bingo event.





Avondale
Primary School

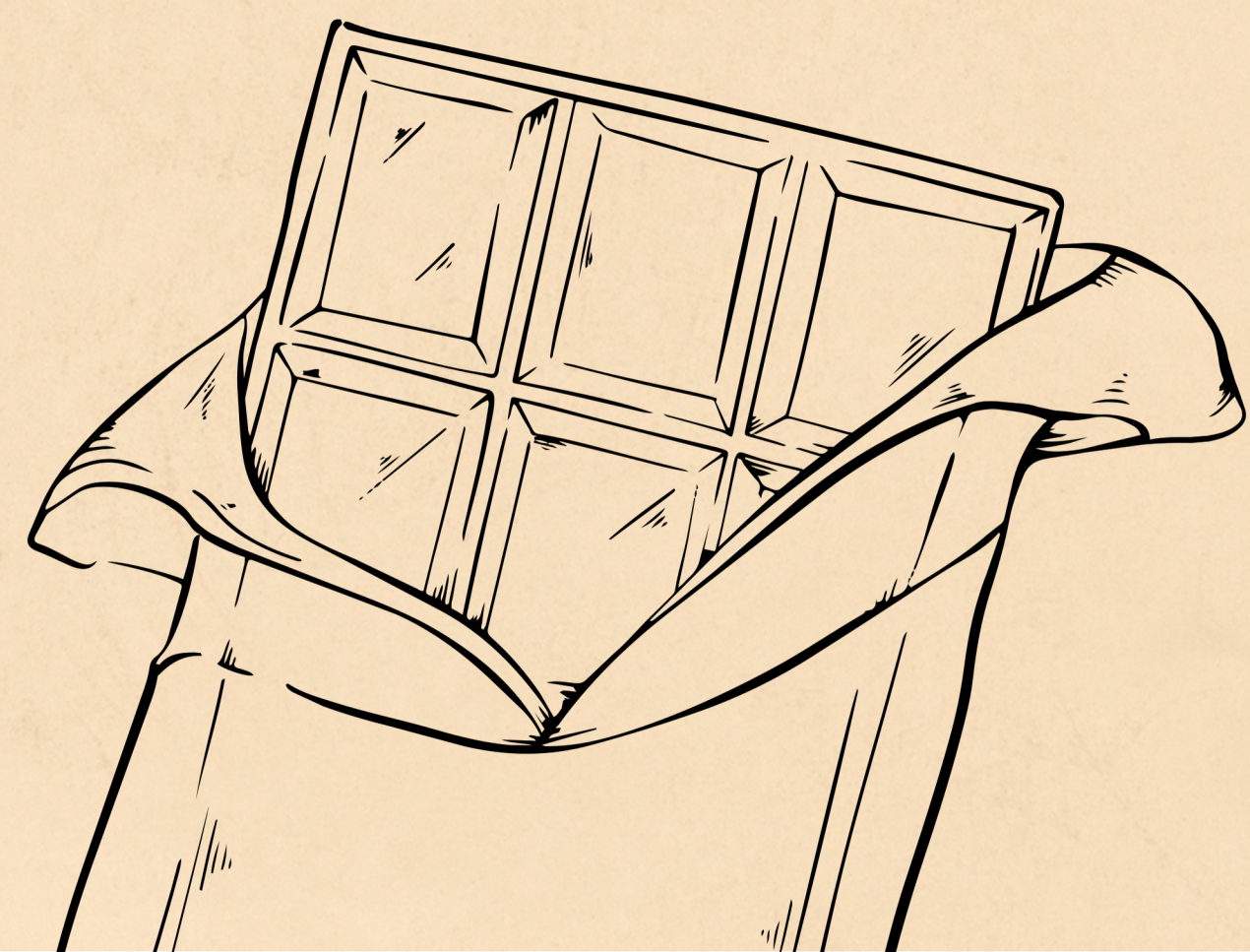
CHOCOLATE BINGO 2026

Friday 24 April – Doors open @ 6:30pm
Eyes Down @ 7:00pm

Tickets are £4 per Adult / £2 per Child or
£15 for a Family Ticket (2 x Adults /up to 4 x Children)

Dabbers / Food / Snacks / Drinks
will all be on sale on the night from 6:30pm

Tickets are on sale from the school office – tickets are
limited.

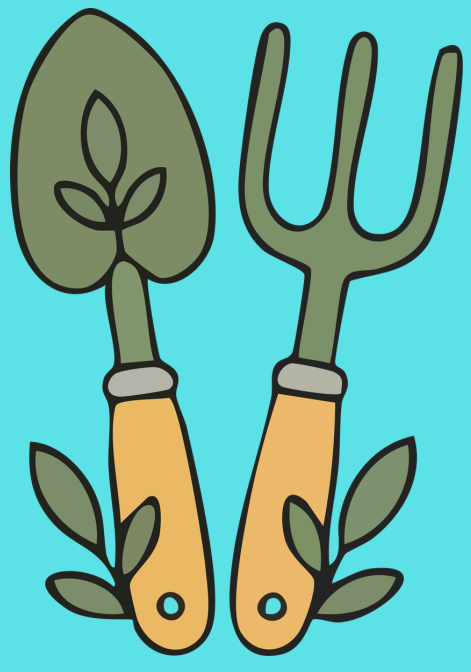


BRCT Inclusion Festival

A group of children visited the BRCT Festival and enjoyed lots of activities including football, goalball, target activities, balloon volleyball and dance sensory movement.

The children all represented school beautifully and all had a fab time





Gardening Club



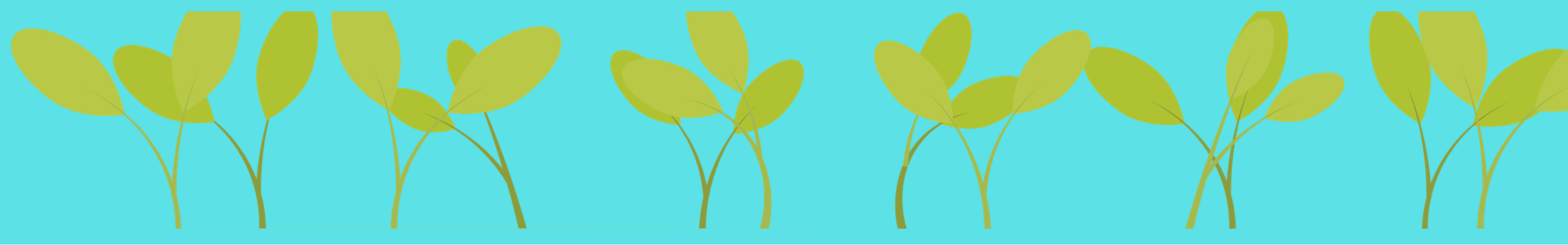
14/4/26



This week we have been planting onions and runner beans.



PIC-COLLAGE



EGG-CELLENT

Absolutely blown away with the standard of entries - they get better and better every year, which makes it really hard to judge with the school council.

Well done to everyone that has entered the competition, all entries received a chocolate bar and a certificate. This year we have year group winners and lots of runner ups! Thank you, Miss Lysons



Join the Avondale Primary PTFA!



We're looking for volunteers to join the Avondale PTFA - whether you can help with fundraising, organise fun seasonal events, or simply lend a hand now and then.

It's a great way to get involved and be a part of the Avondale community!

If you'd be interested in getting involved, please email: friendsofavondale@avondale.blackburn.sch.uk



First Aid Trained?

We're especially keen to hear from any parents that are first aid trained, which helps with the smooth staffing of school events. Thank you.





Fri 24th April – Chocolate Fine Day

Fri 24th April – Chocolate Bingo @ 6:30pm

Wed 29th April – Y1 Trip – Imagine That

Wed 29th/Thu 30th – Bikeability: 5M

Tues 5th/12th May – Bikeability: 5S

Mon 11th–Thu 14th May – SATS Week (Y6)

Tue 12th May – Y4 Trip – Turton Tower

Tue 19th May – EYFS Trip – Mrs Dowson’s Farm

Thu 4th June – Y6 Final Photos

w/c 8th June – Y1 Phonics Screening

Wed 8th June – Whole School Parent Drop In

Tue 9th June – KS2 Sports Day

Thu 11th June – EYFS/KS1 Sports Day

Wed 8th July – No After School Club



Weekly Menu

WEEK 2

MONDAY

BBQ Chicken Pizza
Cheese & Tomato Pizza

TUESDAY

Beef Burger
Veg Ravioli

WEDNESDAY

Pork Sausage
Veg Sausage

THURSDAY

Meat & Potato Pie
Cheese Flan

FRIDAY

Fish Fillet
Veg Nuggets

